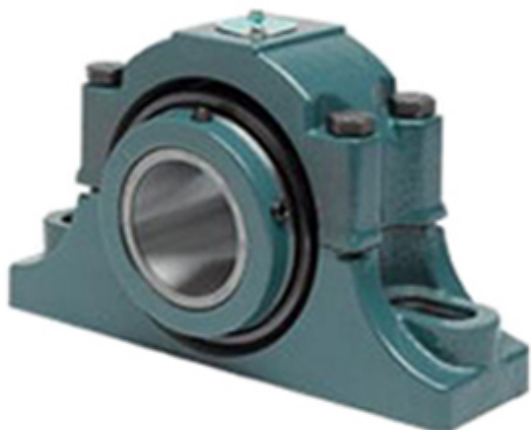




# AMERICAN KOYO BEARING MFG.CORP.



1.5 Inch | 38.1 Millimeter x 3.38 Inch | 85.852 Millimeter x 2.125 Inch | 53.98 Millimeter Dodge P2B-EXL-108RE Pillow Block Roller Bearing Units

Bearing No. P2B-EXL-108RE

P2B-EXL-108RE Bearing 2D drawings and 3D CAD models

Category	Pillow Block Bearings
Inventory	0.0
Manufacturer Name	ABB MOTORS AND MECHANICAL INC
Minimum Buy Quantity	N/A
Weight	5.448
EAN	0782476587543
Product Group	M06288
Number of Mounting Holes	2
Mounting Method	Concentric Collar
Housing Style	2 Bolt Pillow Block
Rolling Element	Tapered Roller Bearing
Housing Material	Cast Iron
Expansion / Non-expansion	Expansion
Mounting Bolts	1/2 Inch
Relubricatable	Yes
Insert Part Number	S1U-EXL-108R
Seals	Triple Lip Contact
Housing Configuration	2 Piece Split
Inch - Metric	Inch
Other Features	Double Row   Double Collar   With Set Screw
Long Description	2 Bolt Pillow Block; 1-1/2" Bore; 2-1/8" Base to Center Height; Concentric Collar Mount; Tapered Roller



## AMERICAN KOYO BEARING MFG.CORP.

	Bearing; 5.56" Minimum Bolt Spacing; 6.44" Bolt Spacing Maximum; Relubricata
Category	Pillow Block
UNSPSC	31171511
Harmonized Tariff Code	8483.20.40.80
Noun	Bearing
Keyword String	Pillow Block
Manufacturer URL	<a href="http://www.dodge-pt.com">http://www.dodge-pt.com</a>
Manufacturer Item Number	P2B-EXL-108RE
Manufacturer Internal Number	077248
Weight / LBS	12
Bolt Spacing Maximum	6.44 Inch   163.576Millimeter
Actual Bolt Center to Center	0 Inch   0Millimeter
Nominal Bolt Center to Center	6 Inch   152.5 Millimeter
d	1.5 Inch   38.1 Millimeter
D	3.38 Inch   85.852 Millimeter
B	2.125 Inch   53.98 Millimeter
Bolt Spacing Minimum	5.56 Inch   141.224Millimeter